

HDMI Female to Female Wall Socket Face Plate

Description:

FARSINCE High Quality HDMI female to female Wall Socket Face Plate is a changeable, modular system that allows components such as sockets, HDMI, or USB connections to be added according to your needs. It can be installed in various module racks or cable ducts. Can build interfaces between electrical, network and system installations, and many peripheral devices such as televisions, monitors, printers, laptops, etc.

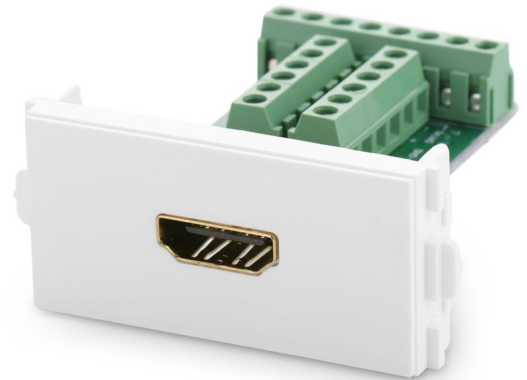
It supports the video resolutions up to 4K*2K@50/60 (2160p). The faceplate is fitted to a standard Fit into most single gang 86mm x 86mm back boxes for wall mounting.



Item no. FSP3015

Specification:

- Connector 1: HDMI female
- Connector 2: HDMI female with wall socket face plate
- Gold plated contact, Gold plated shell
- Housing: Injection molding
- Interface Size: 24*48mm, Brand new imported fire retardant PC material
- Bandwidth up to 18Gbps
- 4K/50/60 (2160p), which is 4 times the clarity of 1080p/60 video resolution
- Compliance: RoHS, REACH



Order Informaiton:

- FSP3015A: 4K HDMI 2.0 Female to Female Wall Socket Face Plate
- FSP3015B: 4K 90° Angle HDMI 2.0 Female to Female Wall Socket Face Plate
- FSP3015C: 4K HDMI 2.0 Female to Female Solderless Wall Socket Face Plate